

## New Product Information

### Rotary actuator

#### AC servo actuator: SHA Series + YASKAWA AC Servo $\Sigma$ -7 Series



The HarmonicDrive® AC Servo Actuator SHA Series can now be used together with the "Σ-7 Series" AC servo drive made by YASKAWA Electric Corporation, which enables support for MECHATROLINK-III communication. This further expands the options for selecting the connection network.

### Harmonic Drive®

#### HPG Series Helical Gear Type



Integer full speed ratios from low-speed reduction 3 to 10 have been added to the HarmonicPlanetary® HPG Series as a helical gear specification. A helical gear is also used for the thin flexible gear, which achieves high reliability with extremely low backlash degradation.

### Rotary actuator

#### AC servo actuator: High-Accuracy FHA-C-PR Type (Optional)



The addition of a high-accuracy specification type makes the AC servo actuator FHA-C series even more complete.

In addition to standardizing the repeatability and reverse positional accuracy of the FHA-C series, it is ideal for all applications requiring high-precision positioning.

### Harmonic Drive®

#### CSF Mini Series Ultra Flat/High Stiffness Type



The development of the lightweight/ultra flat/high stiffness type makes the CSF mini series (which offers unitized versions of small HarmonicDrive® models) even more complete.

It is substantially flatter than conventional unit type CSF mini series models, and uses a cross roller bearing for the main roller bearing in the output part to achieve high stiffness.

### Rotary actuator

#### AC servo actuator: High-Accuracy SHA-CG Type with Stand (Optional)



SHA-CG type with stand (optional) is now available for the flat shape and hollow bore structure AC servo actuator SHA series.

As with a direct drive motor, it requires no processing of the equipment side, and allows for simple mounting.

This makes it even easier to use the SHA-CG type.

### Harmonic Drive®

#### CSG Series Sealed Configuration Full Unit Type

The sealed full unit type: The newest addition to the HarmonicDrive® CSG series lineup.


To Customers Considering our Products for the First Time

New Product Information

Select by model name

Select by Product Category

Application and System Examples

[Selection software](#) 

[CAD Downloads](#)

[Manual Downloads](#)

[Catalog Downloads](#) 



[Contact Form](#) 

[Using this Site](#)

[Offices](#)

HarmonicDrive® Principles 

HA-800 Series AC Servo Drive   
Quick Start Guide

Your solution to motor drive system Problems   
Motor System Solution 

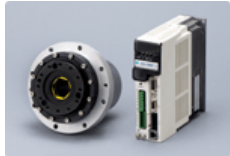


It maintains the same flat shape, but the sealed structure offers simple design and a product that is easy to handle.

[Have a look at product information on the page for the CSG series here.](#)

#### Rotary actuator

### AC servo actuator: SHA Series High-Accuracy SHA-CG Type



High-accuracy SHA-CG type added to the flat shape and hollow structure SHA series AC servo actuator

Offers major reductions in size and weight, with almost the same accuracy and resolution as a direct drive motor

[Have a look at product information on the page for the SHA series here.](#)

#### Rotary actuator

### AC servo actuator: SHA series + Mitsubishi AC Servo MELSERVO J4



HarmonicDrive® SHA series AC servo actuators are compliant with SSCNET III/H communication used by MELSEVO-J4 from Mitsubishi Electric Corporation.

#### Rotary actuator

### SHA Series AC Servo Actuator SHA20



Flat Shape Hollow Structure AC Servo Actuator

Model no. SHA20A, the smallest in the SH series: Another addition to our product lineup

[Have a look at product information on the page for the SHA series here.](#)

#### Harmonic Drive®

### CSG/CSF Series Lightweight Unit Type



The lightweight unit type: The newest addition to the HarmonicDrive® CSG/CSF series unit type lineup.

30% lighter than the conventional unit types

[Have a look here at product information on the HarmonicDrive® CSG series.](#)

[Have a look here at product information on the HarmonicDrive® CSF series.](#)

#### Harmonic Drive®

### SHD Series Unit Type

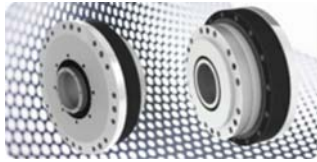


The HarmonicDrive® SHD series featuring an ultra-flat, hollow bore structure: Another addition to our product lineup.

[Have a look at product information on the page for the SHD series here.](#)

#### Harmonic Drive®

### SHG/SHF Series Lightweight Unit Type



**The lightweight unit type: The newest addition to the HarmonicDrive® SHG/SHF series unit type lineup.**

**20% lighter than the conventional unit types**

[Have a look here at product information on the HarmonicDrive® SHG series.](#)

[Have a look here at product information on the HarmonicDrive® SHF series.](#)

## AC Servo Actuator Absolute Encoder / 24DCV version AC Servo Driver HA-690 series FHA-C Mini Series



**A 24VDC input power supply specification has been added for the absolute encoder as well just as it is with the incremental encoder model in conventional products. The far better variation with the FHA-C mini series means meeting customers' various requirements.**

[Have a look at product information on the page for the HarmonicDrive® FHA series here.](#)

[Have a look at product information on the page for the HA-690 series here.](#)

## AC Servo Actuator RSF Supermini Series RSF-3C/RSF-5B



**Redesigned! The world's smallest AC servo actuator incorporated with HarmonicDrive® adopts a flexible cable boosting reliability!**

[Have a look at product information on the page for the RSF supermini series here.](#)

## HarmonicPlanetary® HPGP Series High-torque Type



**Delivers approximately 33% more torque than the HPG series planetary gear speed reducer.**

**The HPGP Series is a gear head type speed reducer outfitted with high stiffness bearings (cross roller bearings).**

**Contributes to even further downsizing in equipment.**

[Have a look at product information on the HarmonicPlanetary® HPGP here.](#)

## Harmonic Drive® CSG Series High-torque Type CSG-GH Series

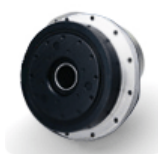


**The CSG series is a gear head type HarmonicDrive® in the CSG series for high load capacity outfitted with high stiffness bearings (cross roller bearings).**

**It has 30% more torque capacity than the CSF series. Its better torque capacity and longer service life delivers better torque to each model in the series.**

[Have a look at product information on the HarmonicDrive® CSG-GH series here.](#)

## HarmonicPlanetary® HPF Series Unit Type



**Comes with a newly developed coaxial input/output shaft and hollow structure type planetary speed reducer.**

**Featuring the excellent performance and characteristics inherited from the HPG series, a new gearbox has been created with the advantage of a new hollow structure.**

[Have a look at product information on the page for the HPF series here.](#)

## Rotary actuator SHA Series AC Servo Actuator

**SHA series and SHA series high-speed type integrated with the HPF series also on sale at the same time**

[Have a look at product information on the page for the SHA series here.](#)



## Harmonic Drive® SHF Series Unit Type



**The compact SHF-11: The newest addition to the HarmonicDrive® SHF-2UH series/unit type lineup.**

[Have a look at product information on the page for the SHF series here.](#)

## Direct Drive Motor KDU Series



**Introducing the KDU Series super high resolution drive motor!**

A direct drive motor capable of super high resolution: "**11,840,000 pulses per revolution**", high-precision positioning: "**absolute position accuracy**" of 10s, and **±0.5s repeatability**. It comes in two models based on output torque.

[Have a look at product information on the page for the KDU series here.](#)

**Product Information**

**Skills & Technology**

**Corporate Information**

**Investor Relations**

**Sustainability**

**HarmonicDrive®  
Principles**

**IIDA KAN**

The academic and general nomenclature for "HarmonicDrive®" is "Strain wave gearing." "HarmonicDrive®" is a registered trademark that can be used only on products which are manufactured and sold by Harmonic Drive Systems Inc.

[Handling of Personal Information](#)

[Using this Site](#)

[Top of the page](#)

COPYRIGHT(C) 1997-2015 HARMONIC DRIVE SYSTEMS INC ALL RIGHT RESERVED.